

Draft Comprehensive Plan – DC2040

Recommendation on Release for Public Review

Dakota County Planning Commission, February 22, 2018

Requirements Based On:



Efficient, Effective, Responsive

- Minnesota Statutes (473.859 and 394.24)
 - Comp Plan and Land Use requirements
 - Framework needed to support County official controls
- Met Council THRIVE 2040 guidance
- Met Council Policy Plans (Transportation, Parks, Water)
- Met Council System Statement for Dakota County
- Met Council Checklist for Dakota County

County Board Direction



Efficient, Effective, Responsive

Submit only required elements to Metro Council

- Omit optional chapters on Economic Development and Resilience

Update the plan, don't rewrite it

- Extract required information from existing plan and update as needed

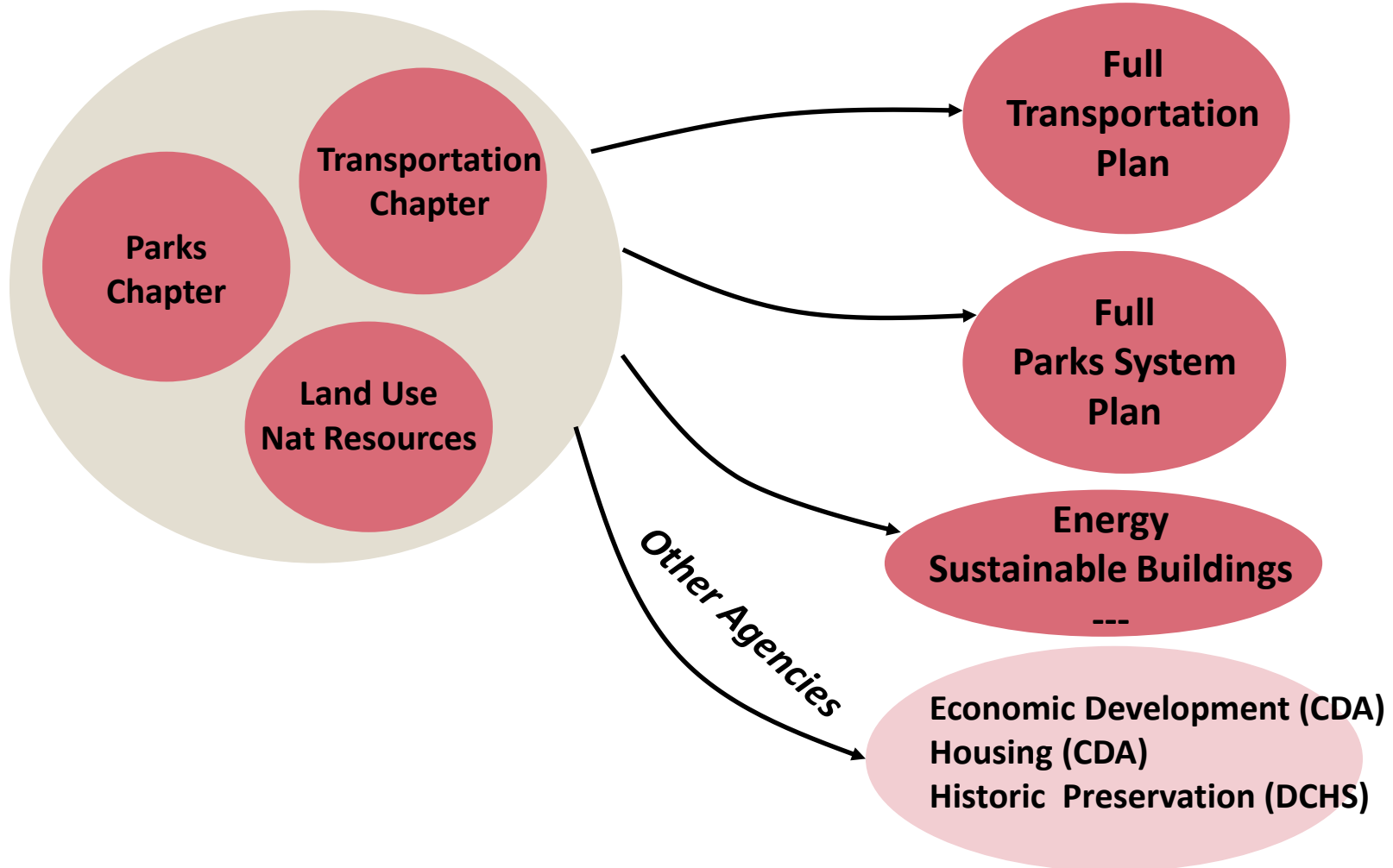
New DC 2040 Organization



Efficient, Effective, Responsive

Comprehensive Plan

County Standalone Plans and Policy



Community Engagement



Efficient, Effective, Responsive

PHASE 1 RESEARCH	2017
Scientific Residential Mail Survey	Mar-May
Online Survey	June-Sept
County Program Staff Meetings	Mar-Nov
Local, State, Regional Agency Meetings:	May-June
Intercepts at Public Events: four sessions	July-Aug
Focus Groups: Transportation; Natural Resources and Parks	August
PHASE 2 DRAFT GOAL REVIEW	2018
County Program Staff Meetings	Nov-Feb
Agency and Focus Groups: Transportation ; Natural Resources and Parks	Jan-Feb
Intercepts (Farmington Expo, Galaxie Library) and Online Survey (58 responses)	Jan-Feb
Open House at Dakota Lodge	Feb

Cities, Agencies, Organizations:



Efficient, Effective, Responsive

- County has role in transportation information and coordination
- Target transit investments to connect households and jobs, when workers need to get there
- Address transit “last mile” issues, pedestrian “last 100-500 feet”
- Near-Term Technological Changes:
 - Pilot electric vehicle charging stations
 - Pilot vehicle to infrastructure communications
 - Monitor autonomous vehicle (AV) technology, consider AV impacts to land use and roads longer-term

Cities, Agencies, Organizations:



Efficient, Effective, Responsive

- Water supply quantity concerns, based on growth, increased use, and periodic drought
- Water supply quality concerns based on salt and chemicals
- Concern about energy, climate, hazard mitigation and strong interest in County role in energy
- Cities and County should collaborate on Emerald Ash Borer, invasive species, wildlife inventory, park programming
- Emphasize County parks as natural/nature-based

Public Comments



Efficient, Effective, Responsive

- Want new trail connections, some grade-separated crossings
- Need better transit (to jobs, east-west, rural areas, Hwy 52)
- Pedestrian safety issues at several major road intersections
- Concern for added traffic on County roads and local streets from new development in adjacent cities, especially Vikings facility area



Public Comments



Efficient, Effective, Responsive

- Use traffic calming and mitigation measures as traffic volumes increase
- Use sustainable street and park design, such as lighting/type
- Keep making trails pedestrian and bike friendly, consider trail maps that identify steepness of routes.
- Consider pedestrian safety first for trails

**See the Dakota County Park System Plan for more detail on the Guiding Principles.

Parks & Trails Goals and Objectives

GOAL 1: GREAT PLACES
Add appropriate park recreation and services that people expect and appreciate.

Objectives:

- Provide a balanced variety of high-quality, popular, year-round activities to promote healthy active lifestyles.
- Welcome visitors of all backgrounds, interests, and abilities to their parks.
- Exemplify sustainability and innovation as recreation trademarks of Dakota County Parks.
- Enhance provision of quality outdoor and environmental education.
- Provide exceptional service delivery and build public awareness of recreation opportunities.

Low Priority → High Priority

GOAL 2: CONNECTED PLACES
Develop a network of collaboratively operated greenways to link parks and popular destinations

Objectives:

- Protect, restore, and connect Dakota County's urban natural areas and open space (green infrastructure), using recreational greenways as a building block.
- Provide convenient and accessible recreational open space.
- Create Greenway Collaboratives to achieve mutual objectives for greenways and trails.

Low Priority → High Priority

GOAL 3: PROTECTED PLACES
Protect and manage natural and cultural resources and green infrastructure in Dakota County

Objectives:

- Implement the 2017 Natural Resources Management Plan to manage vegetation, water, and wildlife in regional parks, park reserves, county parks, greenways, and park conservation areas.
- Protect, design, and maintain scenic park viewsheds to enhance visitor experience.
- Protect park cultural resources and offer appropriate opportunities for visitors to experience them.
- Design and maintain park facilities sustainably.
- Acquire and protect parklands and regional trail right of way through a strategic and comprehensive approach. Dakota County's Official Mapping Ordinance 130 may be applied when acquiring land for parks and other public facilities.
- Develop and enhance collaborations that advance County parkland acquisition and protection.
- Protect public-value lands through a strategic and comprehensive approach.

Low Priority → High Priority

GOAL 4: BUILD AWARENESS OF PARKS, INFORM AND ENGAGE THE PUBLIC

Objectives:

- Build awareness of the Park System.
- Enhance public access to timely and specific park information, including safety recommendations, recreation, park resources, events, programs, projects, and services.
- Engage the public in meaningful and diverse ways, through communication and outreach.
- Provide park operations and services using the 2017 Parks Visitor Services Plan to enhance visitor experience, increase natural resource awareness, and serve more residents.
- Increase volunteerism in the park system.

Low Priority → High Priority

What do you think?
Identify what priority level each goal has for you and your family by placing your dot on the line according to low or high priority.

Draft Goals – Highest Priorities (non-scientific method):

People expressed support for all 21 goals in the Plan

Highest Priority Goal Areas:

- Water quality and quantity
- Natural resources protection and stewardship
- Great Parks experiences
- Transit

Draft Plan Contents



Efficient, Effective, Responsive

1. **Introduction:** plan purpose, guidance, development process
2. **County Trends:** demographics
3. **Transportation:** roads, ped-bike, transit, freight, aviation
4. **Park System:** parks and greenway system
5. **Land Use and Natural Resources:** population forecasts, special resources, official controls
6. **Implementation:** priorities and funding, DC2030 crosswalk

1. Introduction



Efficient, Effective, Responsive

Contents

- Plan purpose
- Plan guidance
- Planning process summary

Recommended Changes to Packet Version

- Replace DC2030 Guiding Principles with County Board Strategic Goals, introduce at beginning of plan

2. Demographics



Efficient, Effective, Responsive

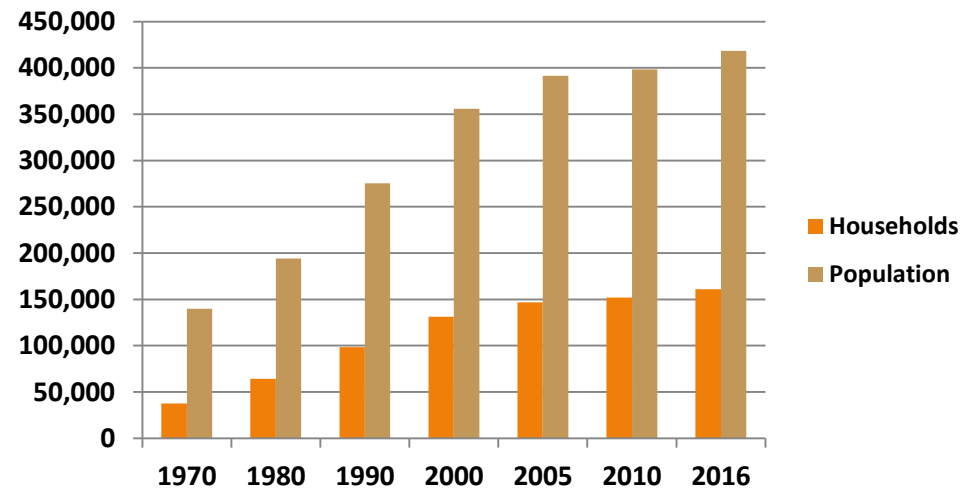
Contents

County demographic snapshot and trends

- Population growth
- Age
- Racial and ethnic diversity
- Educational attainment
- Income
- Labor force and jobs
- Health

Figure 2.1: Dakota County Population Growth: 1970-2016

Source: U.S. Census Bureau



Median population age:

30.25 years in 1990

33.7 years in 2000

35.7 years in 2006

37.5 years in 2015

3. Transportation



Efficient, Effective, Responsive

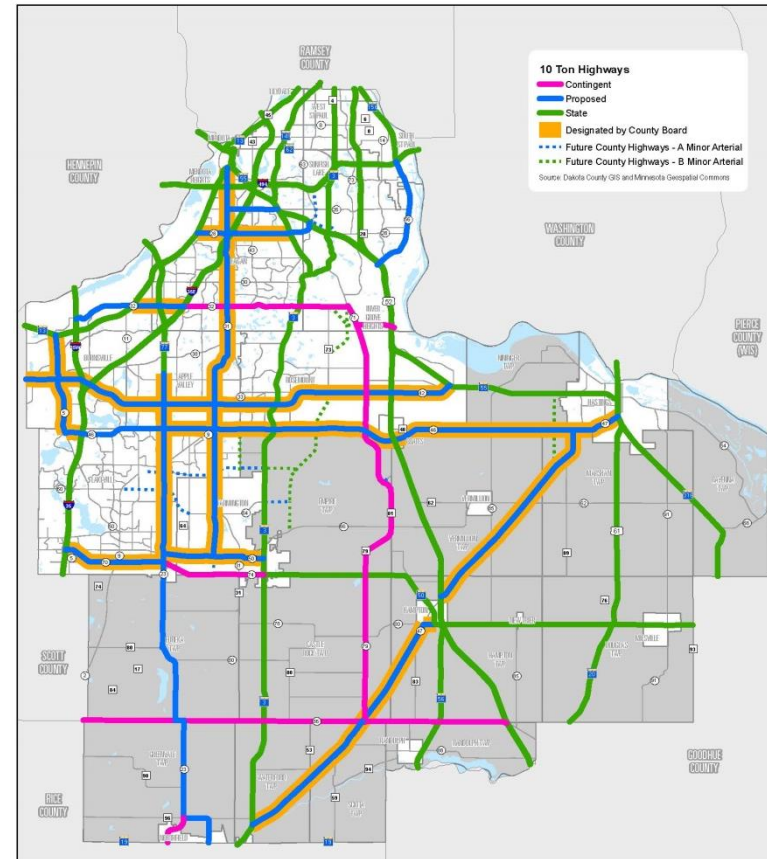
Contents

Doesn't replace Transportation Plan (next update 2019), goals are the same

Need city land use for update

Includes required elements per Metro Council

- Roads
- Transit
- Pedestrian-Bicycle
- Freight and Aviation



3. Transportation

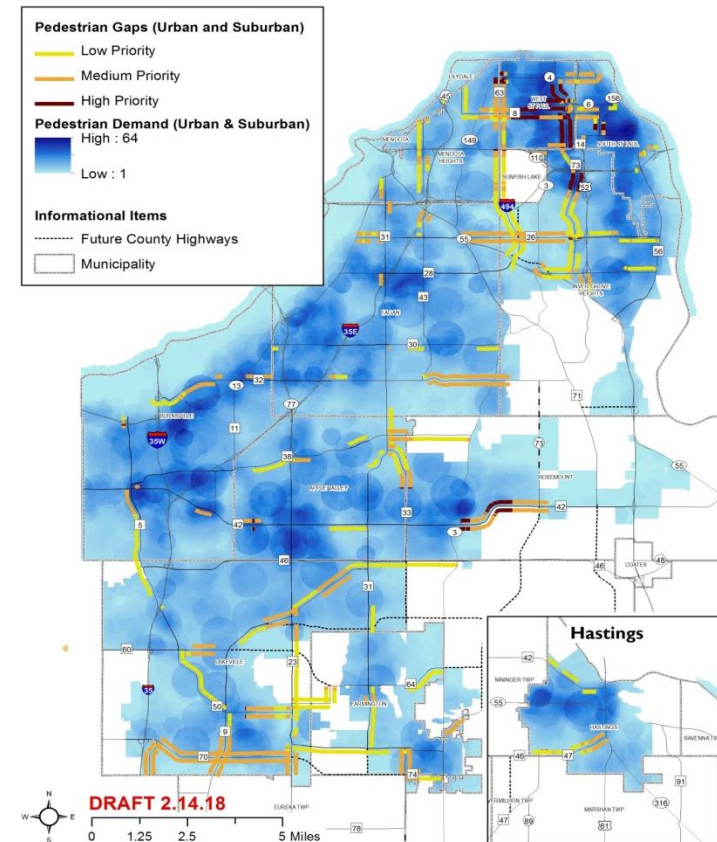


Efficient, Effective, Responsive

New Since Last Plan

Major study recommendations

- East-west transit study
- Principal arterials, north-south arterial
- Regional truck corridor study
- County travel demand model
- Corridor studies (CSAH 31, 50)
- METRO Red Line, Orange Line
- Autonomous/connected vehicle study
- Regional Bicycle Transportation Network (RBTN)



4. Parks



Efficient, Effective, Responsive

Contents

Doesn't replace Park System Plan, high level goals included

Includes required elements per Metro Council

- Current park system maps and descriptions
- Other parks and public lands in County



4. Parks



Efficient, Effective, Responsive

New Since Last Plan

- County Park Conservation Areas (CPCAs)
- More natural resources stewardship
- Park natural resources management plans
- More volunteerism
- New visitor services
- Master plan updates



Stream Restoration on South Creek CPCA

4. Parks



Efficient, Effective, Responsive

Recommended Changes to Packet Version:

Current Goal 4.1: Great Places – Add park recreation and services that people expect and appreciate.

Packet Goal 4.1: Great Places – Add natural resource compatible park recreation and services that people expect and appreciate.

Proposed Goal 4.1: Great Places – Add nature-based or natural resource compatible park recreation and services that people expect and appreciate.

Also change Objective 1: Provide a balanced variety of high-quality, nature-based or natural resource compatible, popular, year-round activities to promote healthy active lifestyles.

5. Land Use - Natural Resources



Efficient, Effective, Responsive

Contents

Land Use

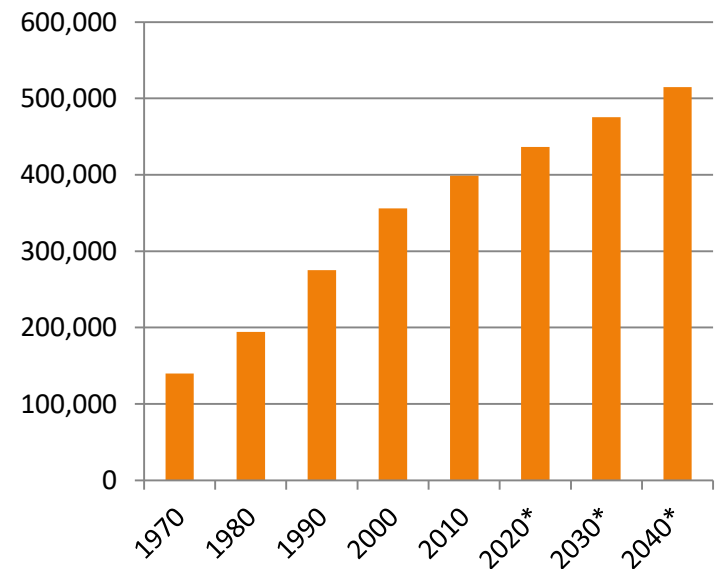
- Forecasts 2020, 2030, 2040

Natural Resources

- Land and Natural Communities
- Surface Water Management
- Water Supply
- Wastewater
- Solid Waste
- Mississippi River Corridor Critical Area (MRCCA)
- Official Controls

Figure 5.1: Dakota County Population Growth and Projections*: 1970-2040

Source: Metropolitan Council



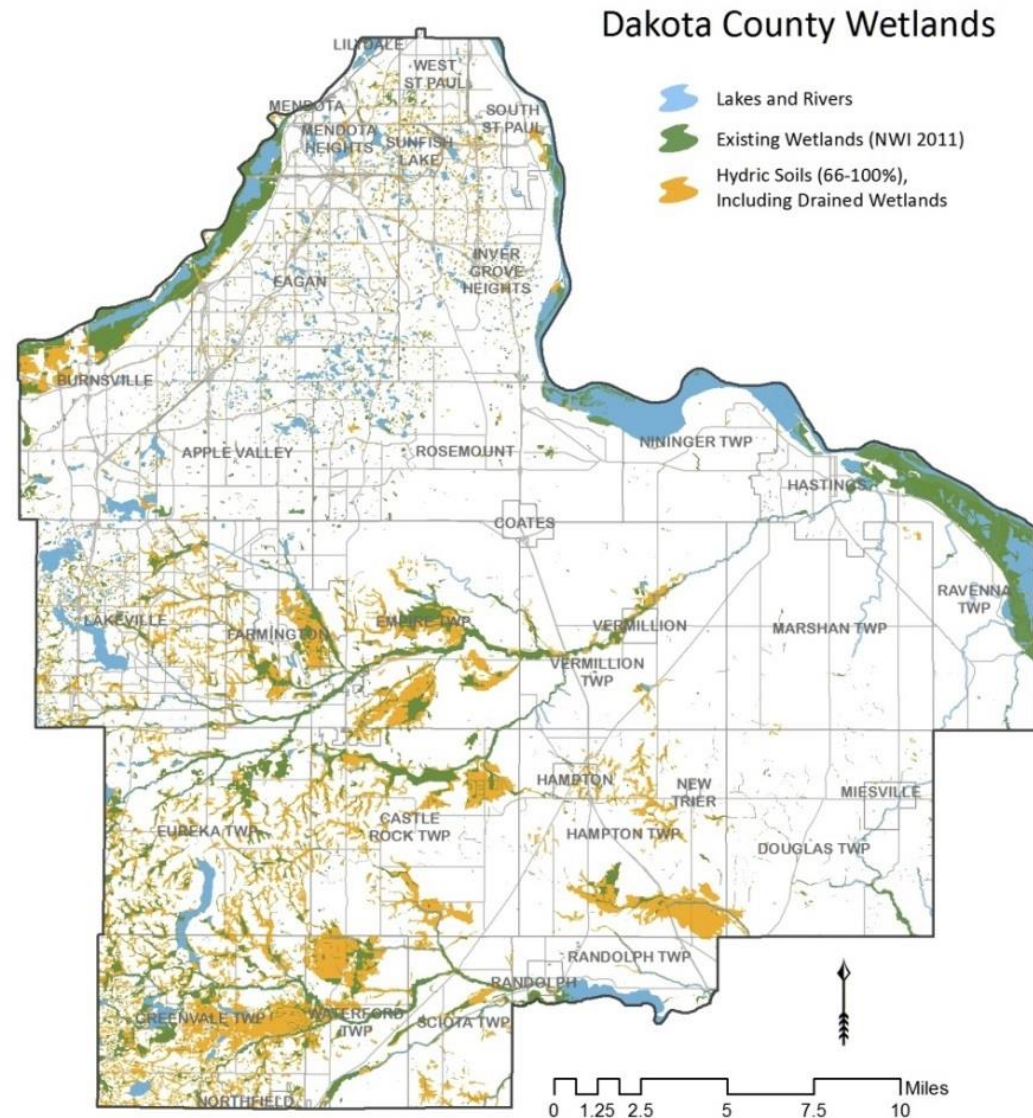
5. Land Use - Natural Resources



Efficient, Effective, Responsive

New Since Last Plan:

- Update Land Conservation Plan
- Restore wetlands
- Update groundwater protection tools
- New solid waste goals



5. Land Use - Natural Resources

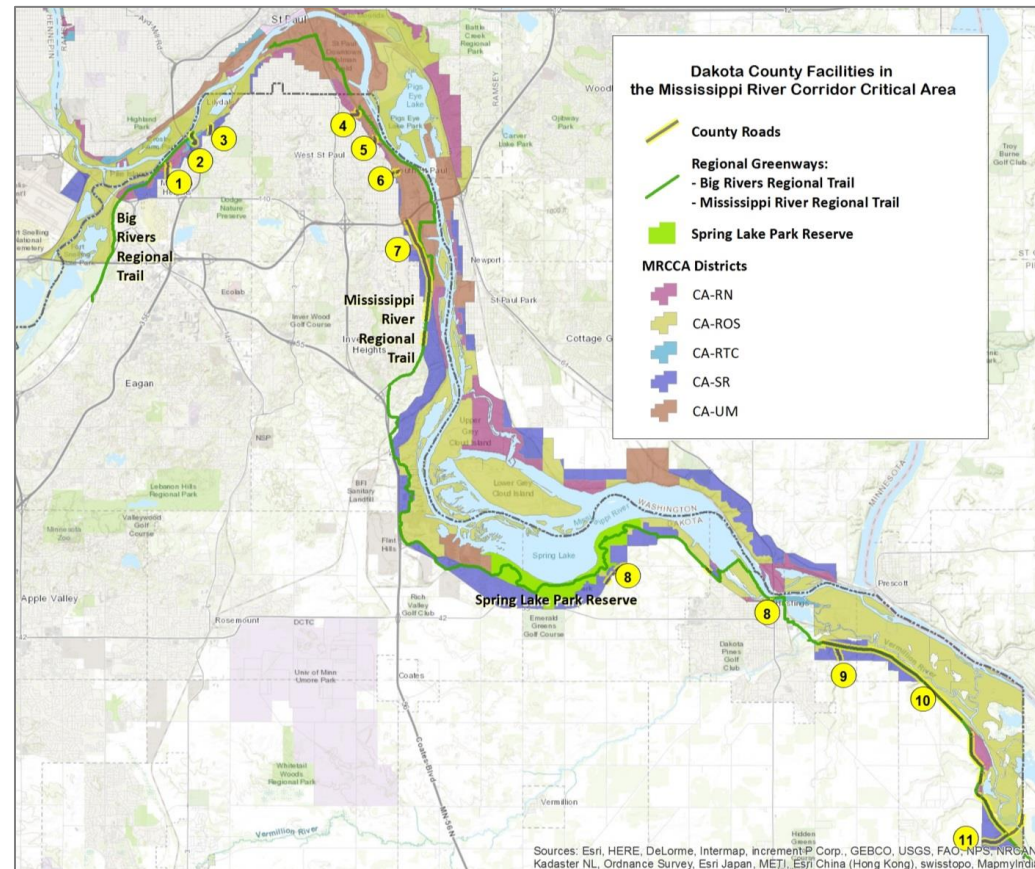


Efficient, Effective, Responsive

New Since Last Plan:

MRCCA Rule 6106

- Districts
- Primary Conservation Areas (PCA)
- Public River Corridor Views
- Surface Water Uses
- Water Oriented Uses
- Open Space/Recreation Areas
- Transportation and Utilities
- Policies and Implementation



5. Land Use - Natural Resources



Efficient, Effective, Responsive

New Since Last Plan:

Goal 5.11: Preserve and enhance the natural, aesthetic, economic, recreational, cultural, and historical values of the Mississippi River corridor within Dakota County and protect its environmentally sensitive areas.



5. Land Use - Natural Resources



Efficient, Effective, Responsive

Recommended Changes to Packet Version:

Clarify MRCCA Actions 4 and 5

Land acquisition

Refer to Spring Lake Park Reserve Master Plan and County road and greenway plans

~~4. Seek opportunities to acquire remaining private inholding properties within Spring Lake Park Reserve as identified in the Spring Lake Park Master Plan, to be updated beginning in 2019.~~

~~5. Work with willing private landowners to permanently protect natural areas using fee title and easement acquisition within the MRCCA.~~

5. Land Use - Natural Resources



Efficient, Effective, Responsive

MRCCA Policy Overview:

Handout at meeting

6. Implementation



Efficient, Effective, Responsive

Contents

Implementation Processes

- Budget
- Capital Improvement Planning
- Official Controls

DC2030 Crosswalk

Related County Plans and Programs

Proposed Next Steps



Efficient, Effective, Responsive

Mar 20	Preliminary Draft Plan to Board PDC
Apr-Oct	6-month official review with engagement (agency review, online posting, open house)
Nov	Final draft to Planning Commission and County Board with public hearing
Dec	Submit to Metropolitan Council
TBD	Final adoption by County Board after Metropolitan Council approval

Requested Action



Efficient, Effective, Responsive

Recommend that the PDC release the Draft Dakota County Comprehensive Plan DC2040* for a six-month public review period

*Draft Plan as modified by Planning Commission on February 22, as needed



Efficient, Effective, Responsive

Thank you